

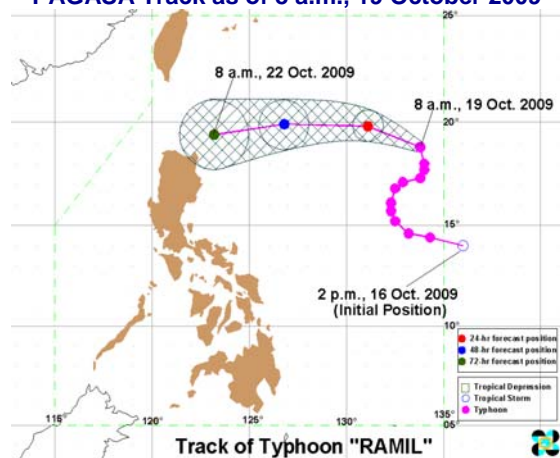
This report was issued by OCHA New York based on inputs from the OCHA Regional Office for Asia Pacific (ROAP) and OCHA Philippines. It covers the period from 17 to 20 October 2009 and addresses Typhoon Parma, Tropical Storm Ketsana and preparations for Typhoon Lupit (Ramil). The next report will be issued on or around 22 October.

I. HIGHLIGHTS/KEY PRIORITIES

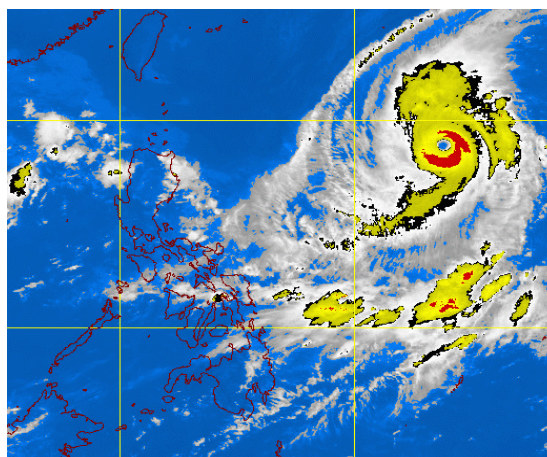
- Typhoon Lupit (*Ramil*) is expected to make landfall in northern Luzon on Thursday 22 October.
- According to the Department of Social Welfare and Development (DSWD) some 126 MT of emergency relief items are being pre-positioned in the Cordillera Administrative Region (CAR), Region I and Region II. This is being done with logistics support of WFP trucks and UNHAS airlift capacity. The Government of the Philippines has also announced the possibility of pre-emptive evacuations.
- On 19 October, the National Disaster Coordinating Council (NDCC) asked the United Nations Resident Coordinator (RC) to reflect areas affected by Typhoon Parma (*Pepeng*) in the upcoming revision of the Flash Appeal. A United Nations Disaster Assessment and Coordination (UNDAC) team was requested to pre-deploy to allow for rapid assessments and support to areas likely to be affected by Typhoon Lupit.
- As of 19 October, the National Epidemiology Center reports that there are 1,670 cases of leptospirosis with 104 deaths in the National Capital Region (NCR). One-hundred cases of Acute Watery Diarrhea have been reported, with three deaths. On behalf of the Humanitarian Country Team, the RC sent a letter to donors in the Philippines, highlighting funding needs in life-saving sectors.
- According to the NDCC, more than 8.4 million people were affected by Typhoons Parma (*Pepeng*) and Ketsana (*Ondoy*), causing 849 deaths.

II. Situation Overview

PAGASA Track as of 8 a.m., 19 October 2009



Satellite Picture at 5 a.m., 19 October 2009



According to the NDCC, some 4,163,476 people were affected by Typhoon Parma, causing 419 deaths. Tropical Storm Ketsana affected 4,348,884 persons, with 420 fatalities. The number of people staying in evacuation centres has decreased to 221,320 (combined data of Ketsana and Parma). An unknown number of people are displaced with host families. A total of 120,000 families are living in houses that are still submerged in water. As of 19 October, the National Epidemiology Center reports that there are 1,670 cases

of leptospirosis, with 104 deaths in National Capital Region (NCR). One-hundred cases of Acute Watery Diarrhea have been reported, with three deaths in two municipalities in the NCR and Region 4A.

On 19 October, Typhoon Lupit, locally known as *Ramil*, was located some 1,160km east of Aparri, Cagayan. According to DSWD, emergency relief items are being pre-positioned in Batanes (Region II); Cagayan (Region II); Isabela (Region II); La Union (Region I); Ilocos Norte (Region I); Ilocos Sur (Region I); Pangasinan (Region I); Benguet (Cordillera Administrative Region/CAR); Apayao (CAR); Kalinga (CAR); Abra (CAR); and Mountain Province (CAR). The pre-positioned stockpiles consist of family food packs, clothing packs, blankets, plastic mats, water jugs and mosquito nets. A total of 126 MT will be pre-positioned with the support of WFP trucks and UNHAS airlift capacity.

III. Humanitarian Needs and Response

On 19 October, the NDCC asked the RC to reflect areas affected by Typhoon Parma in the upcoming revision of the Flash Appeal. The typhoon caused widespread flooding in Regions I, II, III and landslides in CAR. The NDCC also encouraged the deployment of another UNDAC team in the country to allow for rapid deployment to areas likely to be affected by Typhoon Lupit.

Water, Sanitation, and Hygiene

Humanitarian needs: The current priority is responding to needs for access to safe water, sanitation facilities and hygiene items in relocation sites and residential areas affected by the floods. Rehabilitation and improvement of drainage, solid-waste collection and vector control are also top concerns.

Humanitarian response: At the third water cluster meeting held at the Metropolitan Waterworks and Sewerage Systems (MWSS), the chair, Deputy Administrator Bongar, confirmed that MWSS had been mandated to provide support for water-related activities in Pangasinan and other areas affected by Typhoon Parma. Medecins Sans Frontiers (MSF) is operational in St. Pedro municipality. It is building latrines in Paseta Elementary School and Cono Mile Rice evacuation centres, providing two blocks of four latrines with 10,000-litre tanks per block. The Philippines National Red Cross and counterparts from the Spanish Red Cross are operating in Quezon City in North Fairview and Gulod *barangays*; Rizal province in Cainta; and Taytay municipalities and Laguna, including Santa Cruz, Paete, Vitoria and Pila municipalities; and providing hyposol to evacuation centres in Laguna. Other activities include training hygiene promotion in schools, the distribution of soap, buckets and trash bins. Oxfam is operating in Laguna and Rizal Provinces. Save the Children (SCF) is working in Muntinlupa, Metro Manila, where Evacuation Centre 13 has water quality concerns.

Gaps and Challenges: Further data is required to establish a complete picture of the situation. The cluster is discussing ways of addressing the information gaps in high-risk areas. The collection and safe disposal of solid waste is a major concern of organizations operating in flood-affected areas to reduce the risk associated with waterborne diseases, i.e. diarrhea, leptospirosis and dengue. High water levels continue to prevent access/drainage/cleaning of some areas in Pasig, Marikina, Cainta, Antipolo, Laguna and Rizal.

Health

Humanitarian needs: As of 19 October, the National Epidemiology Center reports 1,670 cases of leptospirosis, with 104 deaths in the NCR. One-hundred cases of Acute Watery Diarrhea have been reported, with three deaths in two municipalities in the NCR and Region IV-A.

Humanitarian response: The Department of Health (DOH) has deployed the following teams: 206 medical; 32 psychosocial; 33 WASH; five nutrition; four disease surveillance, 14 assessment; and 65 public health teams; and seven international teams to 494 sites. DOH and Local Government Units (LGUs) have developed a strategy for leptospirosis prevention, control, and treatment. Leptospirosis prophylaxis have been given to 2,662 individuals in NCR and Region IV-A.

Gaps and Challenges: Some areas are still inaccessible due to flooded and damaged roadways.

Food

Humanitarian needs: Food requirements will be approximately double the requirements initially forecast for the response to Typhoon Ketsana. The Government has asked WFP to make allocations of the initial consignment of rice to areas affected by Typhoon Parma in addition to the areas affected by Typhoon Ketsana. Therefore, the overall needs are much higher than anticipated. WFP is currently anticipating that the emergency operation will need to extend to March 2010.

Humanitarian response: A total of 4,800 MT of locally purchased rice from the National Food Authority (NFA) is being dispatched to Provincial SWD offices in Regions I, II, III, IV-A, CAR and NCR. The Government will

The mission of the United Nations Office for the Coordination of Humanitarian Affairs (OCHA) is to mobilize and coordinate effective and principled humanitarian action in partnership with national and international actors.

temporarily cover the needs of Regional V. National DSWD made allocations by region. Regional offices are overseeing the provincial level breakdown and municipalities are finalizing breakdown by *barangay*. The ration size for the first distribution is 25kg per household, which is enough food for a family of five for two weeks. A total of 50 MT of High-Energy Biscuits (HEBs) has been pre-positioned in Region I for potential use in areas that may be affected by Typhoon Lupit. A total of 100 MT from Turkey arrived on 16 October and the next 100 MT will arrive in the early hours of Saturday 24 October. The freight and logistics company TNT provided the cost of airlift as a donation.

Gaps and Challenges: Requirements for food will be approximately double the requirements initially forecast for response to Typhoon Ketsana, taking into account the impact of Typhoon Parma and the subsequent populations affected by dam flooding. The Government has asked WFP to make allocations of the initial consignment of rice to areas affected by Typhoon Parma, hence the overall needs are much higher than anticipated. WFP is currently preparing a budget revision to encompass the increases.

Camp Coordination

Humanitarian needs: A total of 12,292 families (160,741 people) are temporarily staying in 191 evacuation centers in the Luzon area. This number is expected to increase by approximately 40 percent once assessments have been concluded in Region IV-A. New spontaneous settlements, as well as Government and private settlements, are increasing in areas still affected by flooding. There is an urgent need to increase delivery of non-food items (NFIs), particularly concerning water and sanitation and health.

Humanitarian response: Cluster partners have made several attempts to assess areas in Region IV-A, but with limited success. The areas continue to be inaccessible. Access is expected to decrease further with the prospect of more rains in the coming days.

Gaps and Challenges: NFI distributions are on-going, but the stocks and available materials are not adequate. WASH NFIs and Family NFIs (bedding and provision of clothing) are the most critical items. Camp managers and camp management committees need to be established in new and old centres and settlements.

Emergency Shelter

Humanitarian Needs: As of 19 October, NDCC data indicates that Typhoon Parma and Typhoon Ketsana have affected more than 8.4 million people, with some 250,000 staying in evacuation centres and the remaining living outside of the evacuation centres. NDCC reported 126,569 houses damaged and 31,571 houses destroyed. There are differences between the needs data reported by NDCC, DSWD, UNDAC and other assessments. The total number of damaged houses is expected to increase once difficult-to-reach areas become more accessible and some (larger) municipalities have collected and reported all their data. The shelter cluster expects that the total number of totally and partially damaged houses will rise to approximately 250,000 (20 percent total damaged – 80 percent partially damaged). In preparation for the Flash Appeal review, a detailed analysis of needs is being conducted.

Humanitarian response: The shelter cluster has adopted an Initial Shelter Strategy, with a timeframe from 15 October to 31 October. The strategy identifies the areas of focus in this initial response as being priority target populations. The strategy will be reviewed continuously and revised to respond to the situation as it develops. A Technical Working Group has initially recommended three types of shelter support (repair kit, shelter kit and transitional shelter kit) and minimum standards. To date, eight organizations have volunteered to become active in shelter activities. Pending detailed assessments, capacity and funding, they will address the shelter needs of approximately 40,000 households. However, this seems insufficient to cover the needs. The cluster expects to find more active NGOs to participate, especially local NGOs. To date, 12 organizations reported completion of NFI distribution for 17,586 households, ongoing distribution for 31,756 households and planned distributions for an additional 15,014 households. A total of 42,242 households are targeted for shelter support once funding is approved. This information has been shared with the NFI cluster.

Gaps and Challenges: Access remains a challenge and increased funding continues to be a priority. Many local NGOs are not yet involved in the cluster mechanism. Issues may arise regarding sourcing local materials for shelter support.

Education

Humanitarian needs: A total of 2,332 schools were damaged by Typhoon Parma and Typhoon Ketsana. Currently 169 schools are being used as evacuation centres. Some 40 schools are still flooded.

Humanitarian response: The Department of Education is continuously tracking students' whereabouts. Rehabilitation of 30 damaged schools is ongoing with a focus on NCR. Activities include site appraisal and mobilization, demolition works and siphoning septic tanks. UNICEF is providing materials to enrich Temporary Learning Spaces for more than 500 children of evacuees. School packs have been distributed to affected school children and in day care centres. UNICEF is also procuring 16,298 more school packs and educational

The mission of the United Nations Office for the Coordination of Humanitarian Affairs (OCHA) is to mobilize and coordinate effective and principled humanitarian action in partnership with national and international actors.

materials for over 50 schools and Early Childhood Care and Development (ECCD) packs for 115 day care centres in Marikina and Pasig.

Consultations are on-going with the Department of Education and NGO partners, particularly Save the Children and Plan International, to collaborate in organizing alternative delivery modes for primary and secondary education using modular or self-learning instructional materials for displaced children in heavily flooded areas. ABS-CBN has addressed Region IV-A and NCR. It engaged in cleaning schools, and providing portable showers for schools and medical missions. Child Fund has addressed 23 *barangays* in Pasay and eight evacuation centres in Laguna.

Gaps and Challenges: The intervention of other organizations is required in the reproduction of the 'Modified In School-Off School Approach' (MISOSA) and 'Effective and Affordable Secondary Education' (EASE) modules for elementary and secondary school children. The cleaning and clearing of 169 schools used as evacuation centres needs to be addressed. The gap in resources for repair/rehabilitation of schools continues to widen as damage assessments come in.

Nutrition

Humanitarian needs: Funds are urgently needed to protect the lives of infants by supporting breastfeeding. This can be done through a supportive environment and limiting the use of bottles, teats, infant formula and other milk products. It can also be achieved by providing complementary foods for infants who are 6-24 months old and supplementary food for pregnant and lactating women.

Humanitarian response: Local NGOs, Save the Children and UNICEF continue to support volunteer breastfeeding support groups in Evacuation Centers in NCR. They encourage mothers to continue to breastfeed and provide the option of wet nursing and use of expressed human milk to relactate. The nutrition cluster is advocating with the food cluster for inclusion of appropriate complementary foods and targeted supplementary foods for pregnant and lactating women.

Child Protection

Humanitarian needs: There is an urgent need for registration of missing, unaccompanied and separated children. Assessments in the northern part of the country are still outstanding. The impact on psychosocial wellbeing is becoming evident with increased depression and anger, now further exacerbated due to uncertainty with regards to closure of evacuation centres. There will likely be high levels of distress in affected areas in the north of the country.

Humanitarian response: Please refer to previous situation report.

Gaps: Access issues and the lack of partners in the northern areas is a major constraint. UNICEF will continue engaging organizations to expand child protection activities in the north.

Agriculture

Humanitarian needs: According to the latest consolidated data from the Department of Agriculture (DA), as of 15 October the approximate total of production losses caused by extensive rainfall following Tropical Storm Ketsana and Typhoon Parma are US\$491,468,569 (Ketsana \$120,603,985, Parma \$70,864,5840). The total damage to agricultural infrastructure is \$577,557,055. Reports from 34 provinces indicate that approximately 614,118 hectares of croplands were damaged and approximately 1.4 million MT of rice, corn, vegetables, fruits and abaca. The most devastated commodity is rice, with 564,420 hectares of land affected and 1,140,160 MT of production losses (source: damage and situation report from the Department of Agriculture, 15 October). A joint FAO and DA assessment has assessed Region III (Buacan, Pampanga and Nueva Ecija) and Region II (Isabela and Cagayan). Regional DAs, farmers and other municipality representatives confirmed the extensive loss of rice commodities and seeds, and addressed the immediate need for seed, fertilizers and support in repairing irrigation infrastructure before the end of this year. Without this help, farmers will lose the next harvest season making it very difficult for them to recover.

Humanitarian response: FAO has strengthened its emergency and rehabilitation capacity with an emergency coordinator and emergency programme staff to support the emergency response, as well as cluster coordination and coordination with the Government and other agencies. FAO and the World Bank are discussing the possibility of a joint Post-Disaster Needs Assessment (PDNA) together with the DA and other relevant actors in agriculture.

Gaps and Challenges: Despite the fact that agriculture is one of the worst affected sectors, as of 20 October, no funding has been received for immediate relief assistance for the affected farmers. Due to some areas being inaccessible, total estimates of damages to the agricultural sector are still on the increase. In addition to the funding for immediate relief, assistance is required for agricultural recovery and rehabilitation packages including in depth damages/needs assessment in the affected areas.

The mission of the United Nations Office for the Coordination of Humanitarian Affairs (OCHA) is to mobilize and coordinate effective and principled humanitarian action in partnership with national and international actors.

Early Recovery

Humanitarian response: On 16 October, the Office of Civil Defense, as Government early recovery cluster lead, chaired a meeting jointly with the United Nations Development Programme. Issues discussed included an overview of the recently established Private/ Public Partnership Reconstruction Commission; initial findings of the rapid needs assessment in Marikina, Pasig and Cainta; and follow-up actions. During the meeting, the World Bank provided an overview of the planned PDNA. When completed, the PDNA be a basis for development partners to mobilize resources based on needs as part of the concerted effort in response to Typhoon Ondoy and Tropical Storm Ketsana.

Emergency Telecommunications

Humanitarian needs: Security VHF telecommunications infrastructure installations at RCBC continue. This segment of the project will significantly improve coverage in Metro Manila and into most of the affected areas in Region IV-A. The cluster continues to provide technical support to the humanitarian community in Metro Manila and in Regions IV-A

Humanitarian response: The rehabilitation phase has already started and the initial phase of emergency telecoms has ended. The TSF team will return to Manila on 20 October. The main recommendation for aid agencies visiting affected areas is to use local ISPs or 3G cards for Internet and GSM for voice communications as all infrastructure is back to pre-typhoon levels in all areas. Negotiations are ongoing with authorities and UNDSS to secure repeater sites in Metro Manila and frequency licensing. The cluster continues to provide technical/call-centre support to the humanitarian community in Manila, and Regions I and IV-A.

Gaps and Challenges: Northern Metro Manila VHF security communications repeater coverage is limited. Wide-area security communications repeater coverage is also limited (Region IV-A).

Logistics

Humanitarian needs: Many villages in northern Luzon remain cut off from standard means of transport. More are expected to remain inaccessible if Typhoon Lupit makes landfall.

Humanitarian response: Helicopter operations began on Thursday, 15 October, with two MI-171 aircrafts. Currently the focus is on sorties out of La Trinidad to supply goods to cut-off villages in Ilocos Sur and Ilocos Norte, and from Tuguegarao to assist those in Cagayan, Isabela, and Fuga Island. Sling operations are planned to deliver supplies to areas where helicopters cannot land. All helicopters are accompanied by an UNHAS staff member to facilitate the air operations and a Philippines Air Force safety pilot. The Logistics Cluster has been coordinating closely with the NDCC and DSWD to accelerate the prepositioning of relief items prior to the start of Typhoon Lupit, which is forecasted to hit northern Luzon in the coming days. These measures are to ensure that once the typhoon has passed, helicopter deliveries can begin immediately to those areas left cut off by flooding and landslides. Three 20-ton trucks were hired by the LCC to carry 42 MT of DSWD relief items to San Fernando in La Union. The convoy left Manila at 08:00 on 18 October accompanied by a police escort. A second three-truck convoy was organized on 19 October to carry an additional 48 MT to Wallace Airbase. The PAF is positioning 44 MT of DSWD goods by fixed wing aircraft at Batanes, Tuguegarao and Wallace Airbase for later delivery by helicopter.

Gaps and Challenges: Helicopter deliveries are likely to be interrupted by Typhoon Lupit. The extent of the impact on operations is not yet known. It is hoped that the ongoing prepositioning of cargo will help meet subsequent needs, but it is likely that more supplies will be required. The Logistics Cluster is encouraging partner organizations to provide more detailed information on needs for warehousing in the Laguna de Bay area.

IV. Coordination

The RC and the Humanitarian Country Team will meet on 20 October to discuss the scope and timeline of the Flash Appeal revision.

V. Funding

As of 20 October, the Financial Tracking System indicates that \$20 million has been pledged or contributed to the Flash Appeal. This represents 27.3 percent of total requirements as initially assessed (\$74 million).

All humanitarian partners, including donors and recipient agencies, are encouraged to inform FTS of cash and in-kind contributions by sending an email to: fts@reliefweb.int

The mission of the United Nations Office for the Coordination of Humanitarian Affairs (OCHA) is to mobilize and coordinate effective and principled humanitarian action in partnership with national and international actors.

VI. Contact

Manila: Ann Kristin Brunborg
Humanitarian Affairs Officer
UN Coordination Office Manila
Tel: +63 2 901 0265
Mobile: +63 917 513 9924
Email: ann.brunborg@undp.org

Manila : Robert MacTavish
Humanitarian Affairs Associate
UN Coordination Office Manila
Tel : +63 2 901 0200 ext 238
Email:
robert.mactavish@undp.org

Mindanao: Matthew Serventy
Humanitarian Affairs Officer
UN Coordination Office
Cotabato
Mobile: +63 917 5878179
Email:
matthew.serventy@undp.org

IASC Coordination and Communications Center (NDCC, Camp Aguinaldo)

Ann Kristin Brunborg, Humanitarian Affairs Officer, +63 (0)9175139924, ann.brunborg@undp.org
Logistics Cluster Coordinator (WFP): Baptiste Burgaud, +63(0)9175948633, baptiste.burgaud@wfp.org
Emergency Telecommunications Coordinator (WFP): John Bursa, +63(0)9175942450, john.bursa@wfp.org

UNDAC Team Leader

Sebastian Rhodes Stampa, +63(0)9199599422, rhodesstampa@un.org

Flash Appeal Focal Point

Caroline Kern, +63(0)09173588666, kern@un.org

IASC Focal Point at NDCC Operations Center

Agnes Palacio, OCHA National Disaster Response Advisor: +63917804332, agnes.palacio@undp.org

OCHA:

Bangkok: Mr. Terje Skavdal, Head of Office, OCHA Regional Office for Asia Pacific, skavdal@un.org

New York: Ms. Pia Hussein, Associate Humanitarian Affairs Officer, OCHA New York, husseinp@un.org

Geneva: Mr. Anvar Munavvarov, Humanitarian Affairs Officer, OCHA Geneva, munavvarov@un.org

Please email humanitarian.info@undp.org to be added or deleted from the mailing list

**For more information on the humanitarian response in the Philippines, please visit:
<http://www.un.org.ph/response.html>**