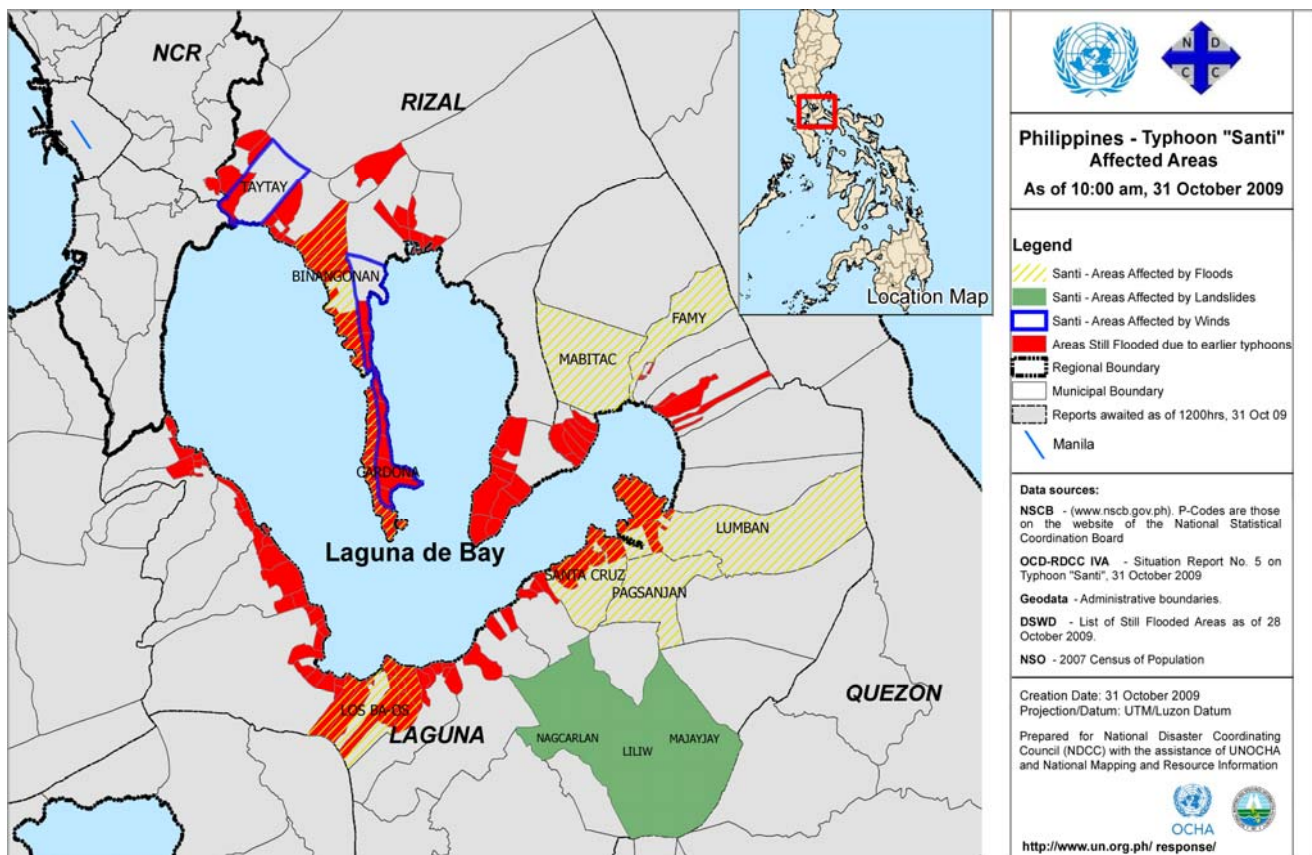


This report was issued by OCHA New York based on inputs from the OCHA Regional Office for Asia Pacific (ROAP) and OCHA Philippines. It covers the period from 30 October to 03 November 2009 and addresses Typhoon Parma, Tropical Storm Ketsana and Typhoon Mirinae "Santi". The next report will be issued on or around 05 November 2009.

I. HIGHLIGHTS/KEY PRIORITIES

- Typhoon Mirinae, locally known as "Santi", made landfall in the Philippines early on Saturday 31 October. The typhoon brought with it maximum sustained winds of 150 kph and crossed Luzon just south of Manila.
- Typhoon Mirinae also caused widespread communications problems and power outages. Much of Metro Manila was without power for more than 24 hours and internet and cellular telephone connections were temporarily cut.
- Typhoon Mirinae also caused transportation delays on the weekend of a national holiday. Air traffic and ferry traffic were delayed/cancelled and the population was advised not to travel on this holiday weekend.
- Assessments of the damages caused by Typhoon Mirinae are ongoing. A joint rapid needs assessment was conducted in Laguna Province on Sunday 01 November.

II. Situation Overview



Map: Typhoon Mirinae "Santi" Highly affected area in Rizal and Laguna Provinces.

Typhoon "SANTI" made a landfall between 12:00 midnight to 1:00 AM local time over Quezon Province, Region IV-A with maximum sustained winds of 150 kph and gustiness of 185 kph. A total of 23,101 families /

115, 507 persons were preemptively evacuated to 251 evacuation centers while others stayed with their relatives/friends in National Capital Region (NCR), Regions IV-A and V. As of 31 October, the National Disaster Coordinating Council (NDCC) reported around 8,567 civilians were stranded and took shelter at various ports

As of 01 November 6AM, the Department of Social Welfare and Development (DSWD) reported that the total affected population of Typhoon Mirinae was 9,194 families, or 48,096 individuals in 230 different barangays. Important to note is that the majority of this figure, some 28,567 individuals, is composed of residents of Region IV-A, one of the most severely affected by Tropical Storm Ketsana (Ondoy).

Typhoon Mirinae also caused widespread communications problems and power outages. Much of Metro Manila was without power for more than 24 hours and internet and cellular telephone connections were temporarily cut. Power and communications companies were able to reestablish services to most of the metro area on 01 November.

A joint rapid needs assessment took place on 01 November in Santa Cruz, Laguna province. Four assessment teams, including members of various IASC agencies, government counterparts, and NGOs, covered the affected parts of the region and provided information for a consolidated report, which is planned for release on 03 November. The assessment data will be used to coordinate the humanitarian response to Typhoon Mirinae.

III. Humanitarian Needs and Response

Camp Coordination

Needs: According to DSWD (DROMIC) data of October 30, there are currently 306 evacuation centres (ECs) in Region IV-A and NCR, hosting a population of over 87,000 people affected by Typhoons Ketsana (Ondoy) and Parma (Pepeng). DSWD additionally reports an increase of up to 12,000 people who moved to ECs as a result of typhoon Mirinae (Santi), but that many of these IDPs have started to return. Assessments of these ECs are ongoing, particularly in Region IV-A, which was hardest hit by the latest typhoon.

A limited number of NFIs - particularly hygiene kits- have been distributed to the worst affected areas including flooded communities and ECs. There is still a significant shortfall in terms of servicing 1.7 million people living in flooded areas and those in ECs requiring NFI assistance.

Response: Formal camp settings are on the rise, and close monitoring and advocacy is extremely important at this stage. The Cluster is encouraging all partners to report back on areas of concern given the expansive nature of this response. Efforts are being made to harmonise data on collective centres from all cluster partners.

Gaps and Challenges: Accessing adequate data is a particular concern as the situation remains highly fluid with ECs closing or relocating rapidly. More evacuation centre assessment teams are still required and there is a continuing significant requirement for NFI distributions to affected populations.

Emergency Shelter

Humanitarian Needs: DSWD and NDCC report that, as of 30 October, 212,563 houses were damaged by typhoons Ketsana and Parma. Of these, 178,792 are damaged and 33,771 destroyed. Typhoon Mirinae is reported to have damaged an additional 5,422 houses (563 destroyed and 4,859 damaged) mainly in Quezon province (IV-A). Approximately 40 municipalities in severely affected areas of Laguna (IV-A) and Pangasinan (III) have not yet reported damages to DSWD/NDCC. The number of damaged houses continues to increase. While it was expected that 250,000 houses would be damaged, new, more detailed extrapolation of data by the Shelter Cluster, predicts that the number will be higher. In the still flooded areas, the total number of damaged houses is expected to reach approximately 190,000. In the no longer flooded areas, this figure is approximately 135,000, which would bring the total to 325,000. In the former category this is 24 percent, and in the latter 2 percent of the total number of houses (calculated by total population divided by five). On average, 16 percent of the damaged houses are considered destroyed.

Response: The Shelter Cluster has identified priority geographic areas in Regions I, III, IV-A and NCR. Target families are those with damaged houses in high- and low-risk areas. Shelter assistance will be provided based on the beneficiary's vulnerability. The cluster partners are working in close cooperation with the communities, DSWD and the local government units.

To date, 14 organizations have planned shelter interventions in the form of repairs, emergency shelter, transitional shelter and relocation support for over 67,500 households. The majority of these (approximately 45,000) are pending the revision of the flash appeal. The strategy advisory group is also studying alternative

interventions such as the promotion of host family sheltering. At this moment 17,586 families have received NFI support. This week the Swiss Development Cooperation will finalize a relocation site for 250 families (San Pedro). IOM and Habitat for Humanity started the distribution of approximately 200 shelter kits (or vouchers). Based on information from the National Housing Authority (NHA) on existing relocation sites, the Government has started relocating people to Towerville in San Jose Del Monte, Bulacan, in Sta. Rosa and Binan, Laguna (those displaced coming from Marikina and Pasig). Shelter NFI distributions, such as household kits, are reported through the NFI cluster.

Gaps and Challenges: The shelter cluster predicts that the total number of houses damaged by Ketsana and Parma will rise to at least 325,000 houses. The planned 67,000 units will cover only about 41 percent of that need (assuming 50 percent of the households need assistance), which creates uncertainty from a funding perspective. The number of IDPs outside ECs is unclear at the moment. Three agencies reported that suitable 'relocation sites' in Laguna area are not readily available.

Food

Needs: WFP revised its estimates of emergency and early recovery needs, taking into account assessments of the impact of Typhoon Parma, and are calling for an additional 44,000 MT of food through March 2010. WFP plans to reach a peak total of 1.5 million people affected by the succession of tropical storms that have hit the country, including assistance to 100,000 of the poorest farmers (approximately 500,000 family members) who have lost their entire rice harvest.

Response: WFP's revised requirements for food relief and early recovery activities are integrated into the revised UN Flash Appeal. Active food distribution monitoring is underway. A total of 4,800 MT of rice and other food commodities are being distributed in 6 Regions (Region I, II, III, IV/A, NCR, CAR) in close coordination with local government authorities and a cooperating partner. So far, monitoring results indicate that the distribution is running smoothly without major problems. To reach the most vulnerable children aged between 6 and 23 months, WFP is preparing to establish a supplementary feeding programme in coordination with the National Nutrition Council. Locally-available food products (ready-to-use supplementary rations) fortified with vitamins and minerals, are currently being evaluated and local suppliers capacity assessed.

Following Typhoon Mirinae, WFP dispatched staff to join an assessment mission on 01 November to Santa Cruz municipality, together with representatives from UNICEF, WHO, Department of Health, DSWD, OXFAM, and ADRA. Food distribution was carried out simultaneously in the area on the same day. Santa Cruz municipality was one of the worst hit towns on Laguna de Bay, the inland lake south-east of Manila that has overflowed its shores. Initial assessment results indicated no major needs for additional food for the assessed areas as the flood water is rapidly receding. However, a small number of people in some additional barangays will be targeted for food assistance.

Gaps and Challenges: Additional donor support is urgently needed to ensure uninterrupted assistance through March 2010, due to a significant increase in the number of beneficiaries and related food requirements.

Health

Members of the Health Cluster took part in the joint rapid needs assessment on 01 November.

Protection

Needs: A rapid inter-agency assessment mission to Santa Cruz revealed, among other issues, an urgent need to identify the most vulnerable among population affected by typhoons Ketsana and Mirinae to facilitate access to assistance (e.g. food, non-food items and water) based on needs, whether or not the persons are in ECs, with host families or living in flooded houses. Access to safe water and sanitation facilities still urgently need to be improved, as well as access to health care.

Response: The rapid protection assessments, whether as part of the inter-agency assessment mission to Santa Cruz or as part of Protection Cluster activities, will provide a basis for identification of needs, capacities and gaps in the protection response, leading to a coordinated strategy and response avoiding duplication and/or gaps.

Gaps and Challenges: Many ECs remain overcrowded, resulting in difficulties to find space for those now displaced after Typhoon Mirinae. Some still lack communication, electricity and telephones. The destruction of houses has, in many cases, affected those living in makeshift shelters, which represent the most disadvantaged sector of society. Being displaced, they have also been separated from their livelihoods, schools etc, requiring a cross-cutting, holistic approach to finding sustainable solutions.

Water, Sanitation, and Hygiene

Needs: Access to safe water, sanitation facilities and hygiene items in the relocation camps and in residential areas affected by the floods is the key humanitarian concern. Rehabilitation and improvement of drainage, solid waste collection and vector control are also top priorities.

Response: In response to Typhoon Mirinae, a needs assessment to Santa Cruz (Laguna) took place on Sunday. Three WASH partner organizations (Islamic Relief, Oxfam and UNICEF) took part in the multi-sector mission. Findings are being consolidated, but no substantial new WASH-related problems were identified. Some sanitary facilities were damaged or blown over by high winds in Calamba and other areas. The second technical working group meeting on safe-excreta disposal took place at Metropolitan Waterworks and Sewerage Systems (MWSS) on 30 October. Ways of scaling up safe-excreta disposal in Laguna and Rizal were discussed, and it was agreed to organize a workshop with the Local Government Units (LGUs) where floodwaters are still high. WASH also participated in a Tri-Cluster meeting (Health, Nutrition and WASH) at Department of Health (DoH) on Friday. The WASH Cluster has convened a meeting with a drainage expert on 03 November, who has been requested by UNICEF to follow up on Laguna de Bay drainage issue. He will address some of the key hydrological issues to be addressed including an assessment of the severity of the drainage problem and the estimated duration of the problem. There was no WATER Cluster meeting on Monday because of the public holiday.

Gaps and Challenges: The major constraint remains how to boost latrine/toilet numbers in sufficient quantities given the technical difficulties of working in flooded areas and the uncertainty about how long ECs will remain open.

Emergency Telecoms

Response: The ETC cluster continues to be on standby for any needs following landfall of Typhoon Mirinae, including any TSF deployments if required. The cluster continues to provide technical support to the humanitarian community in Metro Manila. Security VHF Repeater installation mission to Cabalan/Olongapo departs tomorrow, 03 November. The cluster continues to provide technical support to the humanitarian community in Metro Manila.

Gaps and Challenges: In Northern Metro Manila, VHF security communications repeater coverage is limited. Needs from Typhoon Mirinae have not yet been confirmed. Wide-area security communications repeater coverage is also limited (Region IV-A).

Logistics

Needs: Typhoon Mirinae left much of Santa Cruz and surrounding severely flooded areas, and there have been landslides in the municipalities of Liliw and Nagcarlan. Three bridges in Batangas have been reported impassable.

Response: The Logistics Cluster is extending its support to cover the areas affected by Typhoon Mirinae. On 2 October, helicopter deliveries focused on Liliw near Santa Cruz, which was cut off by floods. The NDCC are organizing trucks to replenish cargo at Camp Capinpin. Flights will likely resume in northern Luzon as of 4 or 5 October to continue planning processes that were postponed by the latest storm. Deliveries will be needed for Calayan and Fuga. As laid out in the Special Operation, the helicopters will operate for one month, with the last missions to be flown on the 14 November. The aircraft will then be redeployed. The Logistics Cluster organized reception for 98 MT of goods flown in from Saudi Arabia and arranged seven vehicles to deliver it to NROC. The road conditions map produced by the Logistics cluster has been updated to include blockages caused by Typhoon Mirinae, and is available on the Logistics Cluster website at www.logscluster.org/ph108a.

Gaps and Challenges: The Logistics Cluster is in discussion to extend LET (UPS-Agility-TNT) support, which is currently contracted to end on 10 November.

IV. Coordination

A Joint Rapid Needs Assessment mission to promptly evaluate the impact of Typhoon Mirinae was carried out on Sunday, 01 November. The results of the assessment will be published and disseminated as soon as possible.

V. Funding

As of 02 November, the Philippines Flash Appeal 2009 is funded at 35 percent, or US\$ 25 million, of the requested \$74 million. The Flash Appeal revision is ongoing and all clusters have submitted revised strategies, prioritization, and response plans.

All humanitarian partners including donors and recipient agencies are encouraged to inform FTS of cash and in-kind contributions by sending an email to: fts@reliefweb.int.

VI. Contact

Manila: Ann Kristin Brunborg
Humanitarian Affairs Officer
UN Coordination Office Manila
Tel: +63 2 901 0265
Mobile: +63 917 513 9924
Email: ann.brunborg@undp.org

Manila : Robert MacTavish
Humanitarian Affairs Associate
UN Coordination Office Manila
Tel : +63 2 901 0200 ext 238
Email: robert.mactavish@undp.org

Mindanao: Matthew Serventy
Humanitarian Affairs Officer
UN Coordination Office
Cotabato
Mobile: +63 917 5878179
Email: matthew.serventy@undp.org

IASC Coordination and Communications Centre (NDCC, Camp Aguinaldo)

Ann Kristin Brunborg, Humanitarian Affairs Officer, +63 (0)9175139924, ann.brunborg@undp.org
Logistics Cluster Coordinator (WFP): Baptiste Burgaud, +63(0)9175948633, baptiste.burgaud@wfp.org
Emergency Telecommunications Coordinator (WFP): John Bursa, +63(0)9175942450, john.bursa@wfp.org

Flash Appeal Focal Point

Caroline Kern, +63(0)09173588666, kern@un.org

IASC Focal Point at NDCC Operations Center

Agnes Palacio, OCHA National Disaster Response Advisor: +63917804332, agnes.palacio@undp.org

OCHA:

Bangkok: Mr. Terje Skavdal, Head of Office, OCHA Regional Office for Asia Pacific, skavdal@un.org
New York: Ms. Pia Hussein, Associate Humanitarian Affairs Officer, OCHA New York, husseinp@un.org
Geneva: Mr. Anvar Munavvarov, Humanitarian Affairs Officer, OCHA Geneva, munavvarov@un.org

Please email humanitarian.info@undp.org to be added or deleted from the mailinglist

For more information on the humanitarian response in the Philippines, please visit:
<http://www.un.org.ph/response>